

Title:

A rare acute thoracic manifestation of a chronic digestive disease: pancreaticopleural fistula

Authors:

Joana Carvalho e Branco, David Valadas Horta, Jorge Reis

DOI: 10.17235/reed.2017.4567/2016

Link: [PubMed \(Epub ahead of print\)](#)

Please cite this article as:

Carvalho e Branco Joana, Valadas Horta David, Reis Jorge. A rare acute thoracic manifestation of a chronic digestive disease: pancreaticopleural fistula. Rev Esp Enferm Dig 2017. doi: 10.17235/reed.2017.4567/2016.

Enero 2017	Volumen 109	Número 1	Páginas 1-86	CODE: REEDBN	ISSN: 1033-0108
------------	-------------	----------	--------------	--------------	-----------------

<p>Revista Española de Enfermedades Digestivas THE SPANISH JOURNAL OF GASTROENTEROLOGY</p> <p>Acceso al texto completo en: www.reed.es y www.sed.es</p> <p>ORGANO OFICIAL DE: SOCIEDAD ESPAÑOLA DE PATOLOGÍA DIGESTIVA, SOCIEDAD ESPAÑOLA DE ENDOSCOPIA DIGESTIVA Y ASOCIACIÓN ESPAÑOLA DE ECOGRAFÍA DIGESTIVA</p>		<p>Factor de Impacto 12018: 1.455-12018 SCIm: 0.34-12018</p>
---	--	--

<p>Editorial</p> <p>Celiac disease: bleeding. Have we identified the risk factors for massive bleeding yet? J. W. Berman Valencia</p> <p>Trabajos Originales</p> <p>Risk factors for severity and recurrence of celiac disease: bleeding N. Jorgensen, P. Carlsén, A. Arvola, M. Eklund and M. Garmo</p> <p>Management of inflammatory bowel disease: the effect of the 2015 European Society of Gastroenterology and Endoscopy (ESGE) guidelines J. Bernal, A. Aguilera, J. López-García, J. García, M. Acuña-Barca, M. Hernández-Tam, C. García, M. de la Cruz, C. Bernal and A. López-García</p> <p>Influence of isolated viral response on the regression of fibrosis and portal hypertension in cirrhotic HCV patients treated with antiviral therapy A. Bernal, J. Caballer, M. J. López-Alaiz, J. L. Forns, M. T. Arasa, A. Esteban, F. Castells, E. Fabrega and J. Crespo</p> <p>Malnutrition risk questionnaire combined with body composition measurement in malnutrition screening in inflammatory bowel disease A. A. Cortés, A. Muñoz, Z. Pili, I. Pall and P. Hebuter</p> <p>A survey-based analysis of endoscopic quality indicators compliance among Spanish endoscopists J. Fernández-Cruz, F. Argüelles, P. Alonso, J. J. Jorba and B. Serrano</p> <p>Revisión</p> <p>Endoscopic resection of colorectal polyps in patients on antiplatelet therapy: an evidence-based guideline for clinicians G. Piana, M. Sostero-Salán, C. Salazar, F. Díaz and M. J. Cárdena</p> <p>Indicadores en Patología Digestiva</p> <p>Neutrophil de la arteria mesenterica superior: una causa infrecuente de obstrucción intestinal J. Bernal, J. J. Jorba, P. Alonso, M. T. Arasa, J. C. García-Pérez</p> <p>Neutrophil de la arteria mesenterica superior: una causa infrecuente de obstrucción intestinal A. F. Romero-Ruiz and R. Bernal-Zúñiga</p> <p>Neutrophil de la arteria mesenterica superior: una causa infrecuente de obstrucción intestinal C. Oña-Soto, C. L. Fernández-Segura, P. Alonso-Rodríguez and M. T. González-Fernández</p> <p>Endoscopic removal of trichobezoars in a schizophrenic patient J. L. Bernal-Hernández, M. T. Torres-Castro and M. Torres-Rodríguez</p> <p>All that glitters is not gold: A different cause for an "alcoholic colitis" A. Rueda, M. Soto, J. Villanueva and S. Navarro</p>	<p>Lección de Enseñanza: diagnóstico por espectroscopia R. Romero-Gómez, M. N. Bernal-Frutos, M. P. Noya y J. L. González-Muñoz</p> <p>Notas Clínicas</p> <p>Celiac crisis in adults: a case report and review of the literature focusing in the presentation of infectious syndrome M. de Almeida-Noronha, Y. L. Ribeiro-Cabral and S. S. Lemos</p> <p>Hemangiopericytoma peritoneo: una localización infrecuente de tumor mesenquimal I. Alonso-Alcalá, J. M. García-González, L. Aguilera-Delgado, A. M. Quintana-Rivera y A. Calvo-Alonso</p> <p>Hemangioma peritoneo: una localización infrecuente de tumor mesenquimal C. Pineda-Carpas, A. Enríquez-Sánchez, M. A. Rojas-Capó, J. Aranguez-Roldán y C. García-Delgado</p> <p>Endoscopic removal of retained large surgical gauze: a case report M. González-Rodríguez and S. Torres-Muñoz</p> <p>Mesenteric schwannoma: an unusual cause of abdominal mass A. Torres-Palacio, M. R. Ramos-Vázquez, J. C. Cordero-Ramón, J. Cordero-Lafuente and D. L. Carballo-Pérez</p> <p>Casos de Editor</p> <p>Neoplasia neuroendocrina intestinal, un tumor poco habitual M. de Bernal, J. J. Jorba, P. Alonso, M. T. Arasa, J. C. García-Pérez</p> <p>Presentación intestinal de leishmaniasis por indicación de perfil genético asociada a consumo de Bismuto: patología infrecuente y poco conocida Y. Pineda-Vargas, D. M. Aguilera y L. A. Alonso</p> <p>Perforación endoscópica iatrogénica en un paciente con múltiples divertículos Y. Pineda-Vargas, D. M. Aguilera y L. A. Alonso</p> <p>Actinobacillus y endocarditis infecciosa: entidades infrecuentes en el diagnóstico diferencial de abdomen agudo C. Sánchez-Jiménez, J. González-Pérez y J. A. Ariza-Pérez</p> <p>Perforación múltiple de divertículos de intestino delgado en paciente con síndrome de Klinefelter R. Bernal-Hernández, A. Bernal-Zúñiga, J. C. Cordero-Ramón, J. Cordero-Lafuente and D. L. Carballo-Pérez</p> <p>Atrofia antral como manifestación paraneoplásica de un adenocarcinoma gástrico J. Bernal-Hernández, J. J. Jorba, P. Alonso, M. T. Arasa, J. C. García-Pérez and J. de la Fuente-Aguilera</p> <p>Revisores 2016</p>
--	--

This is a PDF file of an unedited manuscript that has been accepted for publication. As a service to our customers we are providing this early version of the manuscript. The manuscript will undergo copyediting, typesetting, and review of the resulting proof before it is published in its final form. Please note that during the production process errors may be discovered which could affect the content, and all legal disclaimers that apply to the journal pertain.

CE 4567

A rare acute thoracic manifestation of a chronic digestive disease: pancreaticopleural fistula

Joana Carvalho e Branco, David Valadas Horta and Jorge Reis

Gastroenterology Department. Hospital Professor Doutor Fernando Fonseca. Amadora, Lisbon. Portugal

Correspondence: Joana Carvalho e Branco

e-mail: cbranco.joana@gmail.com

Dear Editor,

A 58-year-old man presented to the Emergency Department with a 2-month history of dyspnea and left pleuritic pain. As past medical history, he reported drinking (100 g alcohol/day) and a smoking habit. His blood analysis were normal, except for elevated C-reactive protein (CRP) (9.8 mg/dl). A chest x-ray showed a left pleural effusion (Fig. 1A). Thoracentesis revealed an exudate, normal adenosine deaminase, amylase of 5,800 U/l, AARB-negative, negative microbiology culture and for malignant cells. The patient had a recurrence of left pleural effusion.

Regarding the suspicion of pancreaticopleural fistula (PPF), he underwent an endoscopic retrograde cholangiopancreatography (ERCP), immediately followed by thoracic-abdominal CT. Wirsungography showed dilation of the secondary branches in the pancreatic head, without progression of the wire beyond the head/body transition (Fig. 1B) or opacification of the proximal Wirsung. Injection of contrast at this level revealed an extra-pancreatic trajectory towards the left thorax into the pleural cavity (Fig. 1C). On CT, the contrast in the Wirsung (Fig. 1D) took an ascending path, dissecting peri-pancreatic adipose tissue (Fig. 1E, thin arrow), adjacent to stomach's lesser curvature (Fig. 1E, thick arrow), entering the thorax through the esophageal

hiatus and finishing in the left pleural cavity (Fig. 1F). For this reason endoscopic therapy was impossible. The magnetic resonance cholangiopancreatography (MRCP) confirmed these findings and showed chronic pancreatitis.

The patient was initially treated with octreotide (0.5 mg tid titrated to 1.5 mg tid) during three weeks and maintained oral feeding. As the fistula remained, he underwent a successful surgical closure.

Discussion

PPF is rare, presenting only in 0.4-7% of chronic pancreatitis (1). For a correct diagnosis, a high degree of suspicion is required (1,2). MRCP is the modality of choice (3), nevertheless its sensitivity is similar to ERCP (3), and if a CT scan is performed immediately after, as in our case, sensitivity increases (4).

The most consensual approach is starting with medical treatment (octreotide and endoscopic therapy) and complement it with surgical closure of the fistula (1-3) when there is no resolution in three weeks.

References

1. Machado NO. Pancreaticopleural fistula: Revisited. *Diagn Ther Endosc* 2012;2012:1-5. DOI: 10.1155/2012/815476
2. Aswani Y, Hira P. Pancreaticopleural fistula: A review. *JOP* 2015;16(1):90-4. DOI: 10.1136/bcr-2014-208293
3. Tay CM, Chang SK. Diagnosis and management of pancreaticopleural fistula. *Singapore Med J* 2013;54(4):190-4. DOI: 10.11622/smedj.2013071
4. Oh YS, Edmundowicz SA, Jonnalagadda SS, et al. Pancreaticopleural fistula: Report of two cases and review of the literature. *Dig Dis Sci* 2006;51:1-6. DOI: 10.1007/s10620-006-3073-7

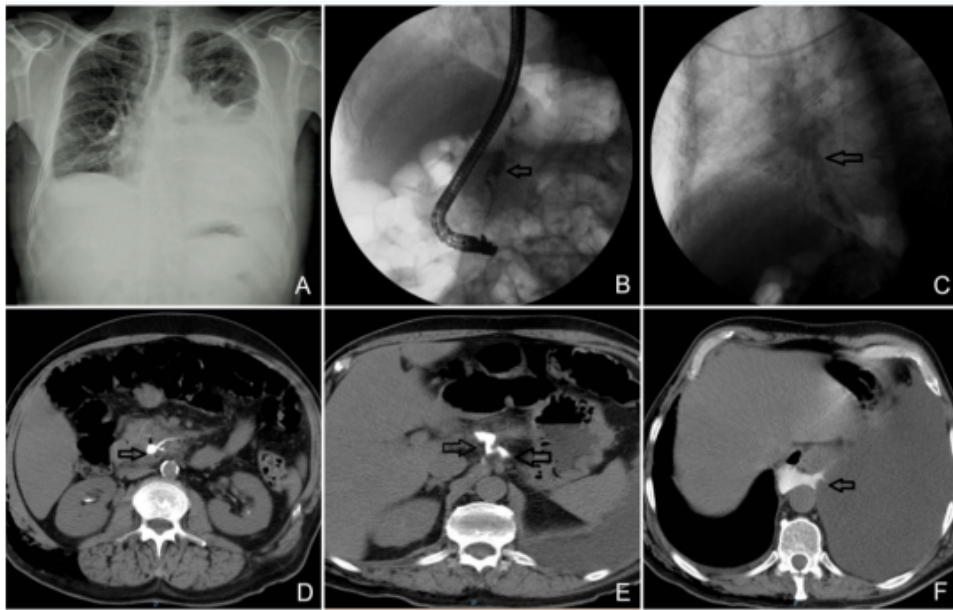


Fig. 1. A. Chest x-ray revealed the presence of a left pleural effusion. B and C. The ERCP showed the existence of a pancreatic stenosis in the head/body transition and contrast leaking from the Wirsung towards the left thorax. D-F. These findings were immediately confirmed on CT scan.